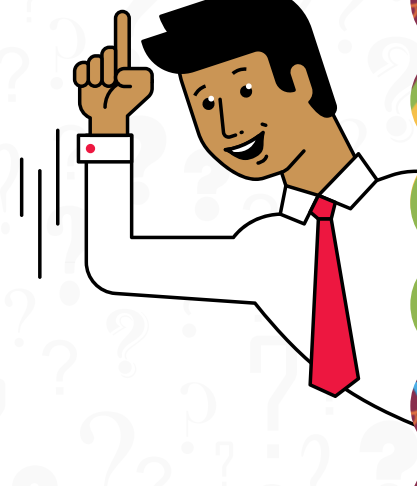


FREQUENTLY ASKED QUESTIONS



What is the goal of the strategy?

Collaborative Youth Leadership for Lasting Health Change in Africa

What do we want to achieve with the strategy?

Elevate the youth agenda at Amref Health Africa, initiate the process of transforming Amref Health Africa into a youth-centric organization, respond more effectively to the needs of youth and adolescents in Africa, and harness the growing opportunities for strategic partnerships on youth and adolescent programming in Africa.

The Youth and Adolescent Strategy has 3 pillars:

1. Advance youth agency in the health agenda
2. Promote data-driven action for youth-led programmes and policies
3. Maximise youth potential and minimise youth vulnerabilities in health through programmes, learning and strategic partnerships

Will the youth strategy be implemented by only the youth or will it include all staff?

The Youth and Adolescent Strategy requires dedication and commitment from everyone: the youth, all staff and all our stakeholders. Amref Health Africa has a Youth Community of Practice with champions from our country offices and national offices. They are the ambassadors of the strategy and will support the teams in the implementation of the strategy.

Is the youth strategy aligned to Amref's global strategy?

Yes. The Youth and Adolescent Strategy is aligned to Amref Health Africa's corporate strategy (2018–2022). We are embracing a transformation, where our overarching mandate, strategies, programs, and operations are youth-centric and happen with, for, and by the youth. The implementation of this strategy will also inform the next phase of Amref Health Africa's corporate strategy, ensuring that we are youth-inclusive and youth-centric!

Who is affected by the youth strategy?

All Amref staff in all departments are affected by the youth strategy. Focusing on youth and giving space to youth leadership should be done at all levels in all Amref entities. The strategy also places focus on youth as beneficiaries of our programs. Africa is young; three quarters of its population is below the age of 35, so it is vital to include youth in program design, implementation, and evaluation.

What is Meaningful Youth Engagement?

Meaningful Youth Engagement means that young people can participate on equal terms with everyone or work independently, in organizations and in all stages of leadership, programming and policy-making: design, implementation, monitoring and evaluation, advocacy, high-level decision making etc. Alternatively, young people can work independently and make decisions solely with the involvement of youth voices. For more information, please [click here](#).

What inspired the strategy?

Africa is in a unique position, with the bulging youth population presenting unique challenges and opportunities. A growing youthful population promises opportunities. Societies and countries have a responsibility to create an enabling environment for the full realisation of their potential, both collectively and as individuals. Amref Health Africa has a dual opportunity to demonstrate leadership by engaging young people as partners, beyond being beneficiaries of their programmes, while catalysing action from state actors, non-state actors and young people themselves. This approach will maximise youth potential and also address current systemic issues that affect youth development as a whole.

How long is the strategy?

The strategy is 2 years from 2021 to 2022 and is aligned to the current Amref Global strategy. There is currently a gap in the Global strategy with regards to meeting youth and adolescent needs. As such, we are currently filling the gap until the next Global Amref Strategy. From 2023 onwards, we expect the Amref Global strategy to have a youth component.

Why the Amref Global Youth and Adolescents Strategy now?

The journey to youth inclusion has started earlier, but there has never been a deliberate way of ensuring we are responsive to the youth internally and in our communities.

